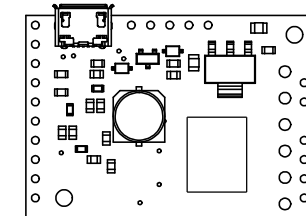
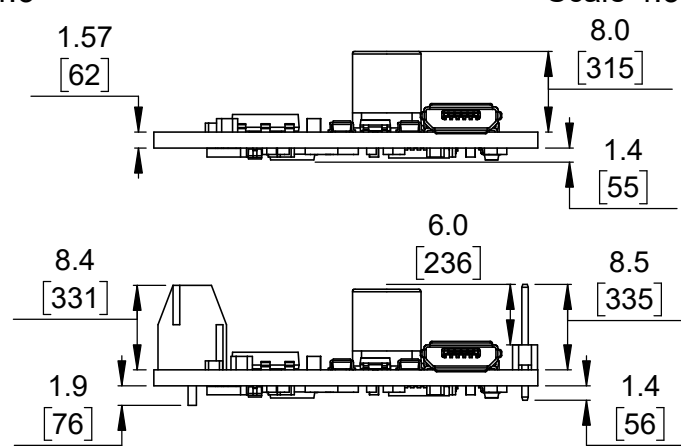
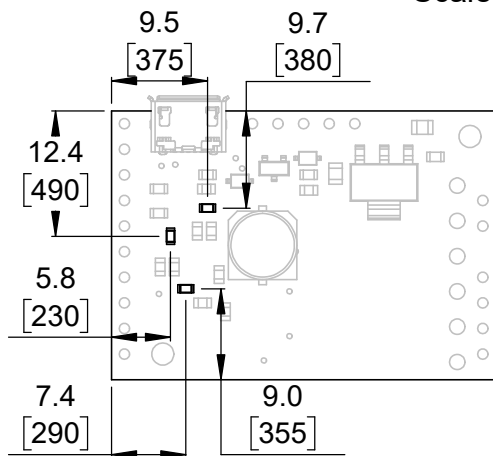


1 Board dimensions (top view)
Scale 4:3

2 Connector callouts (bottom view)
Scale 4:3

3 Isometric view
Scale 4:3



4 User interface elements
Scale 4:3

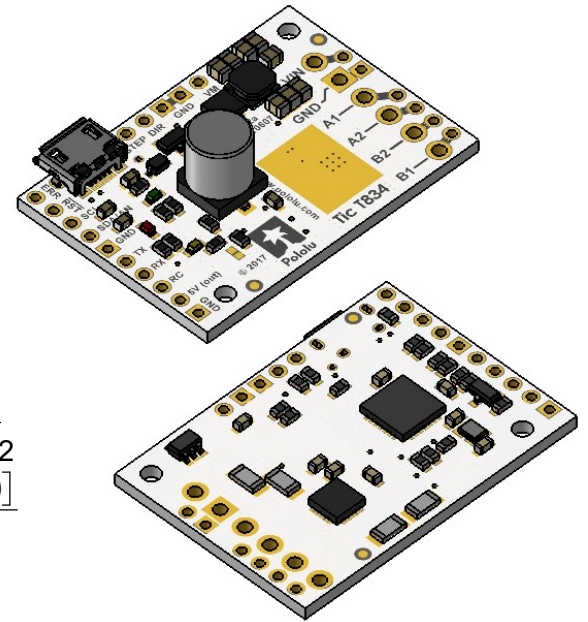
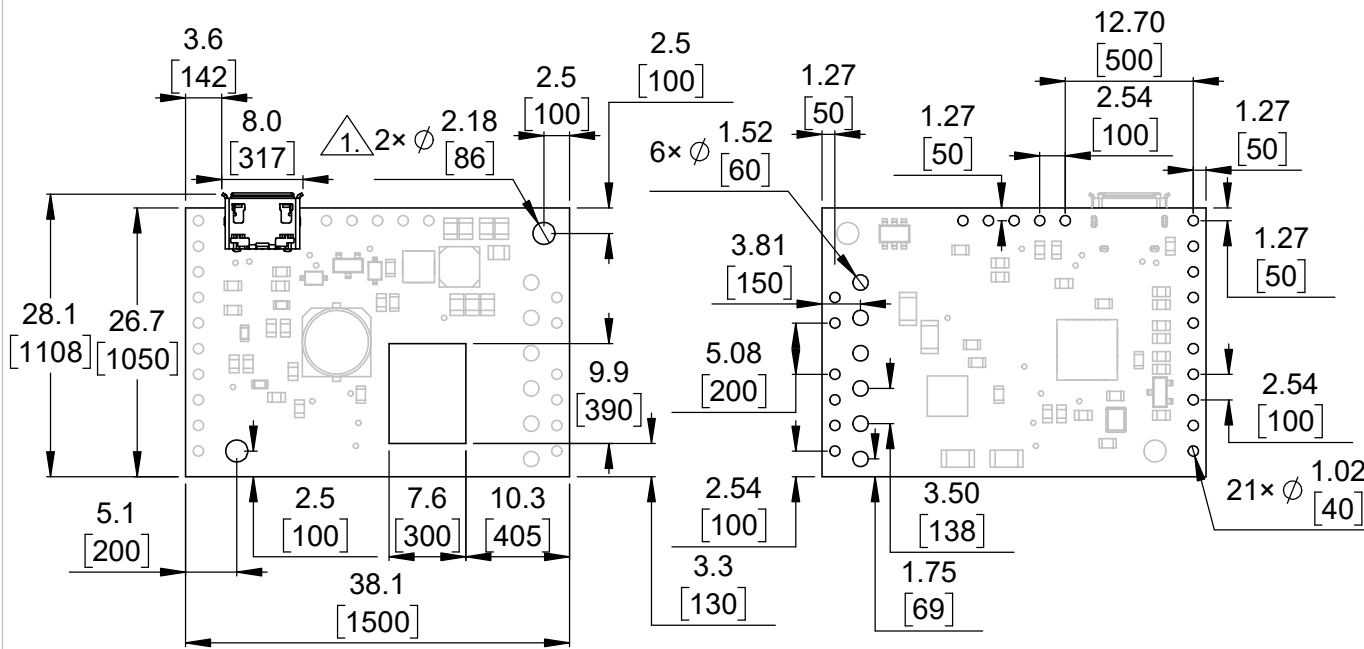
5 Profile
Scale 4:3

6 Actual size
Scale 1:1

1. Intended for #2 and M2 screws.
2. To get the specified scale, select 100% in print settings.
3. Drill location tolerance: ± 0.1 [± 5].
4. Board edge tolerance: ± 0.3 [± 10].

<https://www.pololu.com/product/3130>

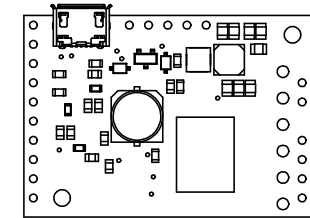
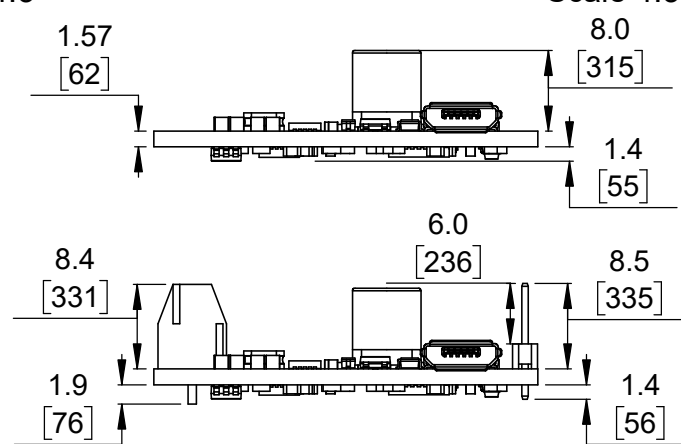
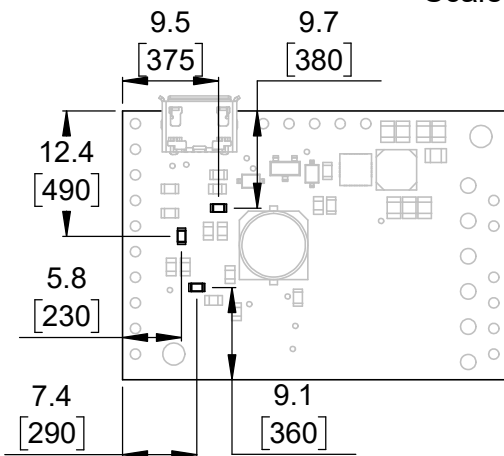
Name: Tic 1825 USB Multi-Interface Stepper Motor Controller		Item number: 3130, 3131
Drawing date: 30 October 2019	Dev code: tic01a	 © 2019 Pololu Corporation
Units: mm [mil]	Material: mixed	



1 Board dimensions (top view)
Scale 4:3

2 Connector callouts (bottom view)
Scale 4:3

3 Isometric view
Scale 4:3




6 Actual size
Scale 1:1

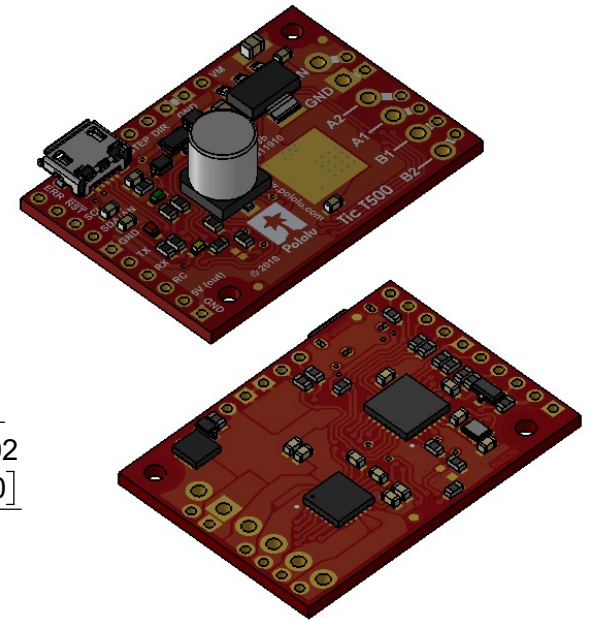
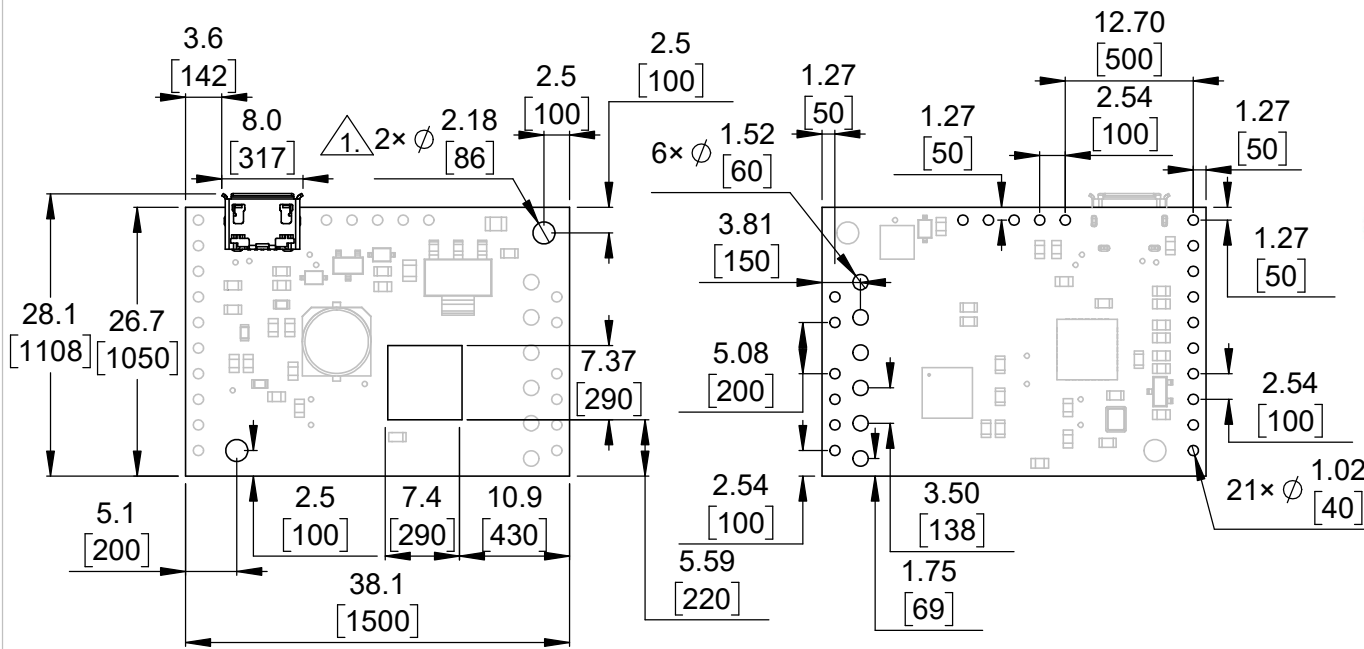
4 User interface elements
Scale 4:3

5 Profile
Scale 4:3

1. Intended for #2 and M2 screws.
2. To get the specified scale, select 100% in print settings.
3. Drill location tolerance: ± 0.1 [± 5].
4. Board edge tolerance: ± 0.3 [± 10].

<https://www.pololu.com/product/3132>

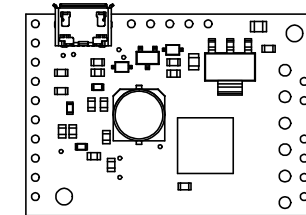
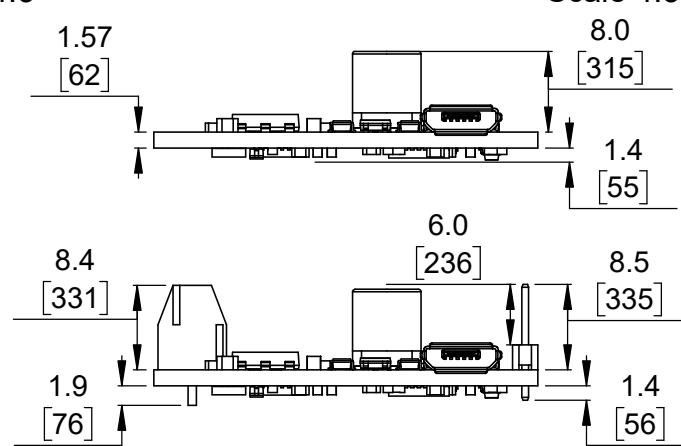
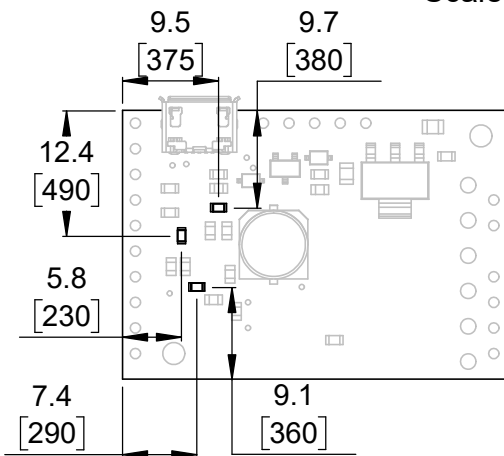
Name: Tic 834 USB Multi-Interface Stepper Motor Controller		Item number: 3132, 3133
Drawing date: 30 October 2019	Dev code: tic02a	 © 2019 Pololu Corporation
Units: mm [mil]	Material: mixed	



1 Board dimensions (top view)
Scale 4:3

2 Connector callouts (bottom view)
Scale 4:3

3 Isometric view
Scale 4:3



4 User interface elements
Scale 4:3

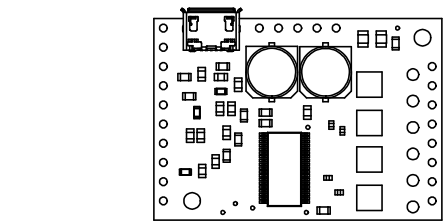
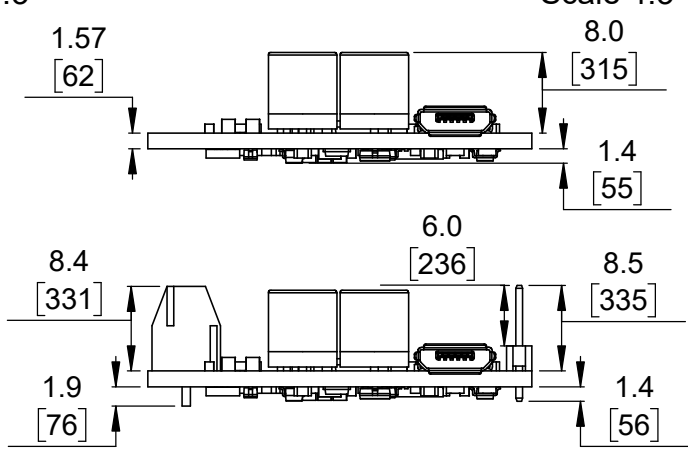
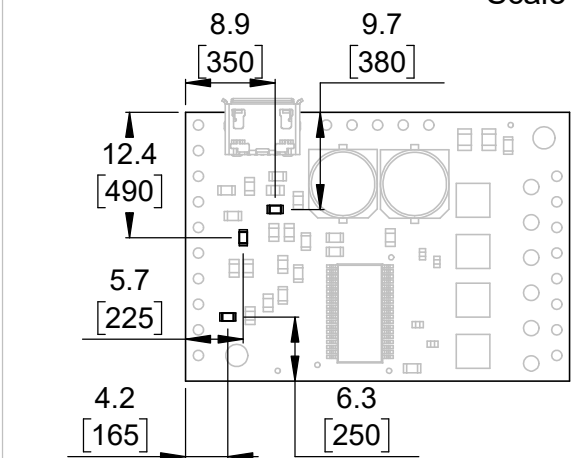
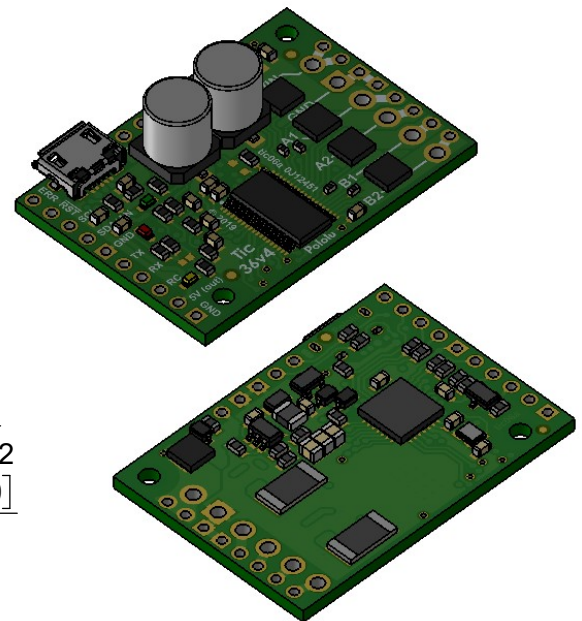
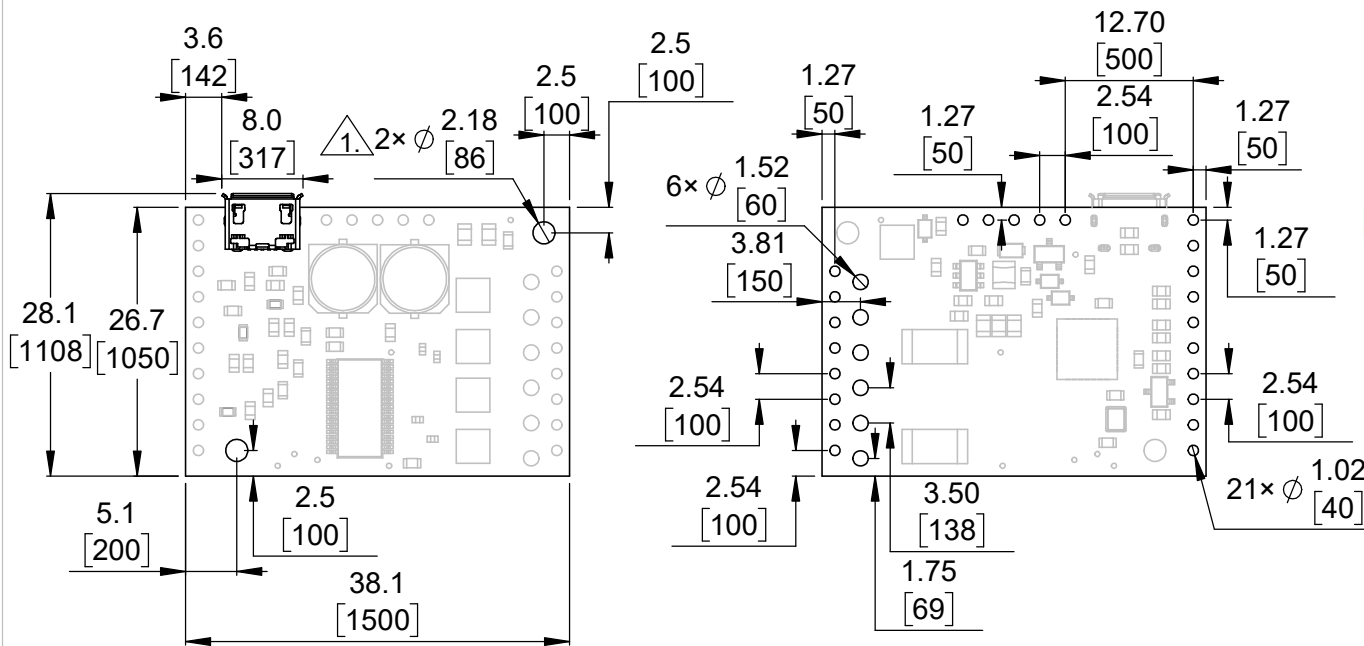
5 Profile
Scale 4:3

6 Actual size
Scale 1:1

1. Intended for #2 and M2 screws.
2. To get the specified scale, select 100% in print settings.
3. Drill location tolerance: ± 0.1 [± 5].
4. Board edge tolerance: ± 0.3 [± 10].

<https://www.pololu.com/product/3134>

Name: Tic T500 USB Multi-Interface Stepper Motor Controller		Item number: 3134, 3135
Drawing date: 30 October 2019	Dev code: tic03b	 © 2019 Pololu Corporation
Units: mm [mil]	Material: mixed	



1. Intended for #2 and M2 screws.
2. To get the specified scale, select 100% in print settings.
3. Drill location tolerance: ± 0.1 [± 5].
4. Board edge tolerance: ± 0.3 [± 10].

https://www.pololu.com/product/3140	
Name:	Item number:
Tic 36v4 USB Multi-Interface High-Power Stepper Motor Controller	3140, 3141
Drawing date:	Dev code:
30 October 2019	tic06a
Units: mm [mil]	Material: mixed

